



MILLENNIUM PARK
NEAR GANGADHAM

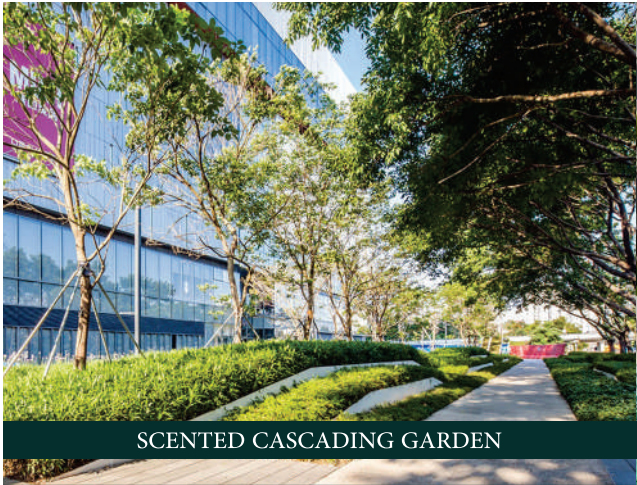


MILLENNIUM PARK

1,1.5 & 2 BHK NEAR GANGADHAM

A modern-day paradise in the heart of
Pune's trading hub, Millennium Park
offers a one-of-a-kind
combination of aspirational lifestyle
with fantastic connectivity.

Every nook and corner of this project says,
"You can live the Good Life too!"



SCENTED CASCADING GARDEN



VITALITY LAP POOL



GAZEBO/RESTING PAVILION



BUSINESS CENTER/CO-WORKING SPACE



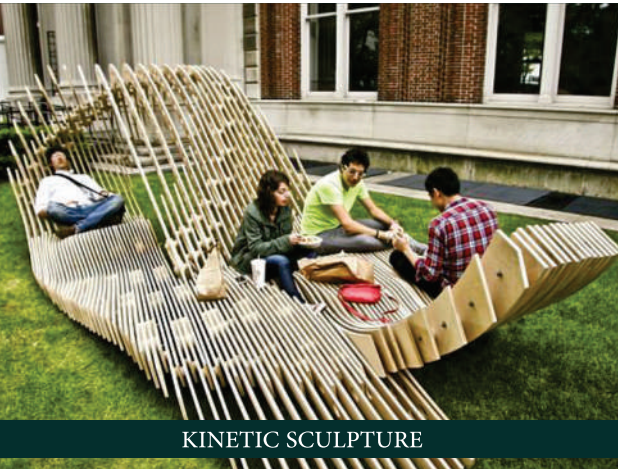
ROOFTOP COFFEE CORNER



EVENTS DECK



YOUTH CORNER (READING/STUDING)



KINETIC SCULPTURE



GARDEN WITH PAVILION

We've left no stone unturned when designing the unique lifestyle amenities which include an invigorating scented cascading garden, refreshing vitality pool, tastefully designed meditation areas, a state-of-the-art business center/co-working space and much more. Enjoy being a part of a vibrant community, with a rooftop coffee corner, a special events deck and a youth corner for generation next. There is no price tag for aspirations and that reflects in the fit and finish of materials used in your new home.



POOL LOUNGE DECK



POOL BUFFER PLANTING



CLUBHOUSE DROP - OFF ACCENT PAVING



CHILDREN'S FOREST PLAYGROUND



OVERLOOKING SIT-OUT DECK



MINI-FOREST WITH AIR PAVILION



AMPHITHEATER



FOCAL SCULPTURE



SENIORS' WELLNESS COURT

Amenities

- Club House
 - Aerobics Studio
 - Music Room
 - Fitness Center Spa
- Swimming Pool
- Rooftop Coffee Corner
- Mini Theater
- Business Center/Co-working Space
- Youth Hub for Reading
- Seniors Wellness Court
- Kids Play Area
- Overlooking Sit-Out Deck
- Gazebo

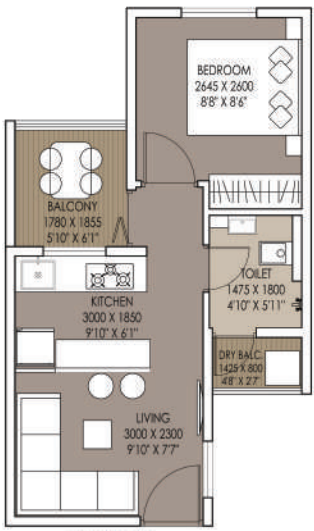
MASTER LAYOUT PLAN



UNIT PLAN



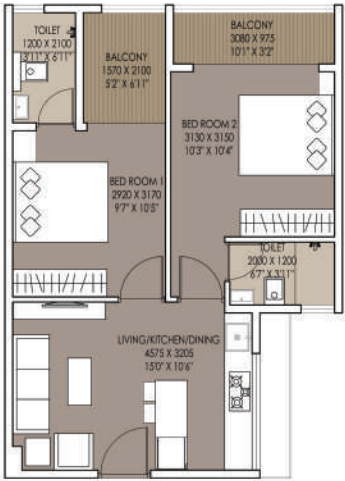
STUDIO CARPET AREA	BALCONY AREA	TOTAL AREA
SQ.MT.	19.01	22.58
SQ.FT.	205	243



1BHK-S CARPET AREA	BALCONY AREA	DRY BALC. AREA	TOTAL AREA
SQ.MT.	25.38	3.30	28.82
SQ.FT.	273	35	320



1.5BHK CARPET AREA	BALCONY AREA	DRY BALC. AREA	TOTAL AREA
SQ.MT.	38.32	7.45	45.77
SQ.FT.	412	80	492



2BHK	CARPET AREA	BALCONY AREA	TOTAL AREA
SQ.MT.	42.39	6.45	48.84
SQ.FT.	456	69	525



A1,A2 & A3 WING
FIRST FLOOR PLAN

- STUDIO
- 1 BHK - Smart
- 1 BHK - Luxury
- 2 BHK - Smart



A1,A2 & A3 WING
2nd, 3rd, 4th, 5th, 6th & 7th FLOOR PLAN
(7th REFUGE FLOOR)

- STUDIO
- 1 BHK - Smart
- 1 BHK - Luxury
- 2 BHK - Smart



A1, A2 & A3 WING
8th, 9th, 10th, 12th & 14th FLOOR PLAN
(12th Refuge Floor)

- STUDIO
- 1 BHK - Smart
- 1 BHK - Luxury
- 1.5 BHK
- 2 BHK - Smart



A1,A2 & A3 WING
11th, 13th & 15th FLOOR PLAN

- STUDIO
- 1 BHK - Smart
- 1 BHK - Luxury
- 1.5 BHK
- 2 BHK - Smart





SPECIFICATIONS :

GRANITE KITCHEN

Granite is a natural stone that is both heat and scratch resistant. To make it even more durable, sealing the material will also prevent staining while helping to keep the surface bacteria free along with regular cleanings. Granite also comes in lots of beautiful colors and patterns.

GEBERIT PLUMBING

Geberit is a made in Germany multinational brand, specialized in manufacturing and suppling sanitary parts and related systems. Geberit plumbing has classic, modern bathroom installations and have been installed a million times over around the world for more than 50 years. They are known for their reliability. Every product is leak-tested before it is delivered. The 25-year guaranteed spare parts availability provides long-term security.

HOME AUTOMATION

The benefits of home automation typically fall into a few categories, including savings, safety, convenience, and control. Living and master bedroom will be equipped with Wifi enabled switches for lights and fan points with provision for Alexa integration.

CP AND SANITARY - AMERICAN STANDARD/GROHE /JAQUAR

Beauty and function strike a balance with American Standard/Grohe/Jaquar bathroom products. For an instant touch of luxury in any bathroom.

MOULDED PANEL DOORS

Whether your home is traditional or contemporary, panel moulded doors come in a range of crafted, designer looks that will create instant appeal. Special edge banding gives high performance and long life to the door. Usually only used in kitchen whereas we are using it in every possible area.

GRANITE KITCHEN

Granite is a natural stone that is both heat and scratch resistant. To make it even more durable, sealing the material will also prevent staining while helping to keep the surface bacteria free along with regular cleanings. Granite also comes in lots of beautiful colors and patterns.

FIRE FIGHTING

Fire fighting systems are the most innovative safety solutions dedicated to help in any emergency. A fire fighting system is probably the most important of the building services, as its aim is to protect human life and property.

4 X 2 GLAZED VITRIFIED TILE

Vitrified tiles are non-porous ceramic tiles. These are long-lasting, low maintenance and scratch resistant tiles. These properties make them the best option for homes. Vitrified tiles come in a wide range of varieties and are able to retain their shine for a long time.



XRBA
BLUE MONTE
BEST LOCATION # BEST LIFESTYLE

929, Mantri House, First Floor,
Near Dnyaneshwar Paduka Chowk, F.C. Road,
Pune, India. Pincode - 411004.
Contact: 08037815880



Registration No. P5210001777
maharera.mahaonline.gov.in

Disclaimer: The amenities, specifications, facilities, surrounding infrastructure, stock images and features shown and / or mentioned and the image renders used are purely indicative and promotional and may differ from the actual. The purpose of this brochure / booklet / prospectus / advertisement is, to indicate to the customers the extent of the amenities and facilities that may come-up in the project as per the present approved layout. T & C apply.