

# Construction Updates



April 2024



## Building A1



Expected possession – 31/07/2024

Activity	A1
RCC	100%
Blockwork	100%
External Plaster	100%
Wall Conduit	100%
External Plumbing	100%
Conceal Plumbing	100%
Fabrication	100%
Water Proofing	100%
Gypsum	100%
Flooring	100%
Window	100%
Door	100%
Wire & Switch work	100%
Internal Paint	100%
External Paint	100%
Snag	100%
Lift	100%

## Building A2



Expected possession – 31/07/2024

Activity	A2
RCC	100%
Blockwork	100%
External Plaster	100%
Wall Conduit	100%
External Plumbing	100%
Conceal Plumbing	100%
Fabrication	100%
Water Proofing	100%
Gypsum	100%
Flooring	100%
Window	100%
Door	100%
Wire & Switch work	100%
Internal Paint	100%
External Paint	100%
Snag	100%
Lift	100%

## Building A3



Expected possession – 31/03/2025

Activity	A3
RCC	100%
Blockwork	95%
External Plaster	0%
Wall Conduit	100%
External Plumbing	0%
Conceal Plumbing	100%
Fabrication	80%
Water Proofing	83%
Gypsum	90%
Flooring	22%
Window	0%
Door	0%
Wire & Switch work	0%
Internal Paint	0%
External Paint	0%
Snag	0%
Lift	0%

## Building A4



Expected possession – 31/03/2025

Activity	A4
RCC	100%
Blockwork	95%
External Plaster	0%
Wall Conduit	100%
External Plumbing	0%
Conceal Plumbing	100%
Fabrication	90%
Water Proofing	83%
Gypsum	90%
Flooring	27%
Window	0%
Door	0%
Wire & Switch work	0%
Internal Paint	0%
External Paint	0%
Snag	0%
Lift	0%

## Building A5

A5-A6



Expected possession – 31/07/2024

Activity	A5
RCC	100%
Blockwork	100%
External Plaster	100%
Wall Conduit	100%
External Plumbing	100%
Conceal Plumbing	100%
Fabrication	100%
Water Proofing	100%
Gypsum	100%
Flooring	100%
Window	95%
Door	100%
Wire & Switch work	90%
Internal Paint	70%
External Paint	70%
Snag	55%
Lift	100%

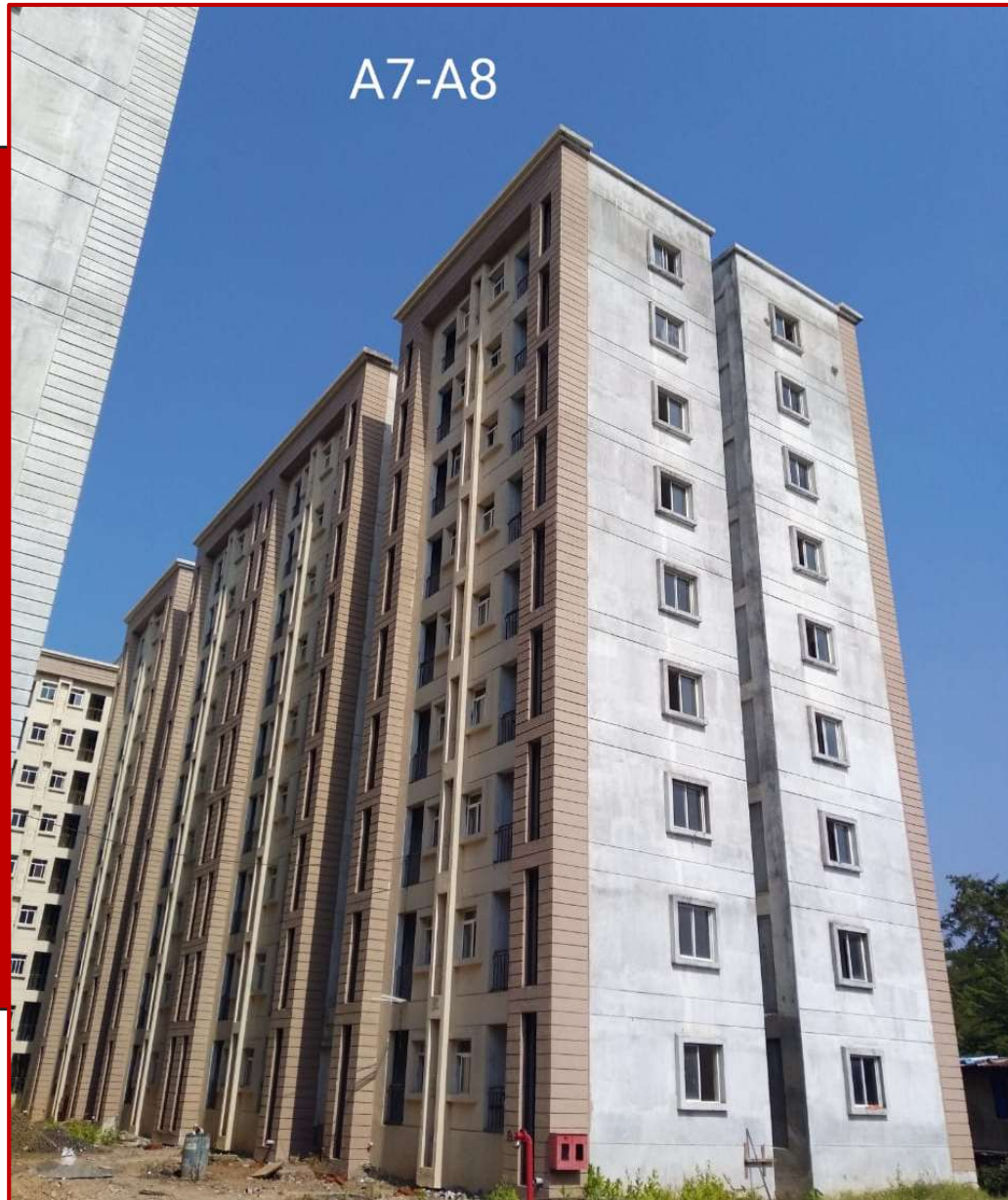
## Building A6



Expected possession – 31/07/2024

Activity	A6
RCC	100%
Blockwork	100%
External Plaster	100%
Wall Conduit	100%
External Plumbing	100%
Conceal Plumbing	100%
Fabrication	100%
Water Proofing	100%
Gypsum	100%
Flooring	100%
Window	90%
Door	100%
Wire & Switch work	80%
Internal Paint	65%
External Paint	70%
Snag	53%
Lift	100%

## Building A7



Expected possession – 31/07/2024

Activity	A7
RCC	100%
Blockwork	100%
External Plaster	100%
Wall Conduit	100%
External Plumbing	100%
Conceal Plumbing	100%
Fabrication	100%
Water Proofing	100%
Gypsum	100%
Flooring	100%
Window	95%
Door	100%
Wire & Switch work	95%
Internal Paint	53%
External Paint	75%
Snag	53%
Lift	100%



## Building A8



Expected possession – 31/07/2024

Activity	A8
RCC	100%
Blockwork	100%
External Plaster	100%
Wall Conduit	100%
External Plumbing	100%
Conceal Plumbing	100%
Fabrication	100%
Water Proofing	100%
Gypsum	100%
Flooring	100%
Window	95%
Door	100%
Wire & Switch work	95%
Internal Paint	60%
External Paint	70%
Snag	55%
Lift	100%

## Building A9



Expected possession – 31/07/2024

Activity	A9
RCC	100%
Blockwork	100%
External Plaster	100%
Wall Conduit	100%
External Plumbing	100%
Conceal Plumbing	100%
Fabrication	100%
Water Proofing	100%
Gypsum	100%
Flooring	100%
Window	100%
Door	100%
Wire & Switch work	86%
Internal Paint	70%
External Paint	70%
Snag	55%
Lift	100%

## Building A10



Expected possession – 31/07/2024

Activity	A10
RCC	100%
Blockwork	100%
External Plaster	100%
Wall Conduit	100%
External Plumbing	100%
Conceal Plumbing	100%
Fabrication	100%
Water Proofing	100%
Gypsum	100%
Flooring	100%
Window	100%
Door	97%
Wire & Switch work	90%
Internal Paint	67%
External Paint	70%
Snag	73%
Lift	100%

## Building B1



Expected possession – 31/07/2024

Activity	B1
RCC	100%
Blockwork	100%
External Plaster	100%
Wall Conduit	100%
External Plumbing	100%
Conceal Plumbing	100%
Fabrication	100%
Water Proofing	100%
Gypsum	100%
Flooring	100%
Window	100%
Door	100%
Wire & Switch work	100%
Internal Paint	100%
External Paint	100%
Snag	100%
Lift	100%

## Building B2



Expected possession – 31/07/2024

Activity	B2
RCC	100%
Blockwork	100%
External Plaster	100%
Wall Conduit	100%
External Plumbing	100%
Conceal Plumbing	100%
Fabrication	100%
Water Proofing	100%
Gypsum	100%
Flooring	100%
Window	100%
Door	100%
Wire & Switch work	100%
Internal Paint	100%
External Paint	100%
Snag	100%
Lift	100%

## Building B3



Expected possession – 31/07/2024

Activity	B3
RCC	100%
Blockwork	100%
External Plaster	100%
Wall Conduit	100%
External Plumbing	100%
Conceal Plumbing	100%
Fabrication	100%
Water Proofing	100%
Gypsum	100%
Flooring	100%
Window	100%
Door	100%
Wire & Switch work	100%
Internal Paint	100%
External Paint	100%
Snag	100%
Lift	100%

## Building B4



Expected possession – 31/07/2024

Activity	B4
RCC	100%
Blockwork	100%
External Plaster	100%
Wall Conduit	100%
External Plumbing	100%
Conceal Plumbing	100%
Fabrication	100%
Water Proofing	100%
Gypsum	100%
Flooring	100%
Window	100%
Door	100%
Wire & Switch work	100%
Internal Paint	100%
External Paint	100%
Snag	100%
Lift	100%

## Building B5



Expected possession – 30/11/2024

Activity	B5
RCC	100%
Blockwork	100%
External Plaster	100%
Wall Conduit	100%
External Plumbing	100%
Conceal Plumbing	100%
Fabrication	100%
Water Proofing	90%
Gypsum	95%
Flooring	100%
Window	55%
Door	80%
Wire & Switch work	40%
Internal Paint	0%
External Paint	80%
Snag	40%
Lift	25%



## Building C1



Expected possession – 30/11/2024

Activity	C1
RCC	100%
Blockwork	100%
External Plaster	100%
Wall Conduit	100%
External Plumbing	100%
Conceal Plumbing	100%
Fabrication	95%
Water Proofing	100%
Gypsum	40%
Flooring	90%
Window	20%
Door	73%
Wire & Switch work	55%
Internal Paint	0%
External Paint	90%
Snag	5%
Lift	50%

## Building C2



Expected possession – 30/11/2024

Activity	C2
RCC	100%
Blockwork	100%
External Plaster	100%
Wall Conduit	100%
External Plumbing	90%
Conceal Plumbing	100%
Fabrication	100%
Water Proofing	100%
Gypsum	100%
Flooring	80%
Window	80%
Door	100%
Wire & Switch work	60%
Internal Paint	0%
External Paint	90%
Snag	5%
Lift	55%

## Building C3



Expected possession – 30/11/2024

Activity	C3
RCC	100%
Blockwork	100%
External Plaster	100%
Wall Conduit	96%
External Plumbing	0%
Conceal Plumbing	100%
Fabrication	0%
Water Proofing	96%
Gypsum	100%
Flooring	19%
Window	0%
Door	0%
Wire & Switch work	0%
Internal Paint	0%
External Paint	0%
Snag	0%
Lift	20%

## Building C4



Expected possession – 30/11/2024

Activity	C4
RCC	100%
Blockwork	100%
External Plaster	100%
Wall Conduit	100%
External Plumbing	55%
Conceal Plumbing	100%
Fabrication	67%
Water Proofing	100%
Gypsum	75%
Flooring	40%
Window	0%
Door	0%
Wire & Switch work	0%
Internal Paint	0%
External Paint	20%
Snag	0%
Lift	60%

## Building C5



Expected possession – 30/11/2024

Activity	C5
RCC	100%
Blockwork	100%
External Plaster	100%
Wall Conduit	100%
External Plumbing	100%
Conceal Plumbing	100%
Fabrication	100%
Water Proofing	100%
Gypsum	100%
Flooring	100%
Window	94%
Door	100%
Wire & Switch work	50%
Internal Paint	37%
External Paint	90%
Snag	0%
Lift	90%

## Building C6



Expected possession – 31/07/2024

Activity	C6
RCC	100%
Blockwork	100%
External Plaster	100%
Wall Conduit	100%
External Plumbing	100%
Conceal Plumbing	100%
Fabrication	100%
Water Proofing	100%
Gypsum	100%
Flooring	100%
Window	100%
Door	100%
Wire & Switch work	90%
Internal Paint	70%
External Paint	90%
Snag	60%
Lift	100%

## Building C8



Expected possession – 30/11/2024

Activity	C8
RCC	100%
Blockwork	100%
External Plaster	100%
Wall Conduit	100%
External Plumbing	100%
Conceal Plumbing	100%
Fabrication	100%
Water Proofing	100%
Gypsum	100%
Flooring	100%
Window	100%
Door	100%
Wire & Switch work	65%
Internal Paint	0%
External Paint	90%
Snag	35%
Lift	100%

## Building C9



Expected possession – 31/07/2024

Activity	C9
RCC	100%
Blockwork	100%
External Plaster	100%
Wall Conduit	100%
External Plumbing	100%
Conceal Plumbing	100%
Fabrication	100%
Water Proofing	100%
Gypsum	100%
Flooring	100%
Window	98%
Door	100%
Wire & Switch work	90%
Internal Paint	73%
External Paint	95%
Snag	60%
Lift	100%



## Building D1



Expected possession – 30/11/2024

Activity	D1
RCC	100%
Blockwork	95%
External Plaster	60%
Wall Conduit	50%
External Plumbing	30%
Conceal Plumbing	80%
Fabrication	100%
Water Proofing	0%
Gypsum	40%
Flooring	0%
Window	0%
Door	0%
Wire & Switch work	0%
Internal Paint	0%
External Paint	0%
Snag	0%
Lift	0%

## Building D2



Expected possession – 31/07/2024

Activity	D2
RCC	100%
Blockwork	100%
External Plaster	100%
Wall Conduit	100%
External Plumbing	100%
Conceal Plumbing	100%
Fabrication	100%
Water Proofing	100%
Gypsum	100%
Flooring	100%
Window	100%
Door	100%
Wire & Switch work	90%
Internal Paint	55%
External Paint	90%
Snag	55%
Lift	100%

## Building D3



Expected possession – 30/11/2024

Activity	D3
RCC	100%
Blockwork	100%
External Plaster	100%
Wall Conduit	100%
External Plumbing	100%
Conceal Plumbing	100%
Fabrication	100%
Water Proofing	100%
Gypsum	100%
Flooring	90%
Window	60%
Door	89%
Wire & Switch work	65%
Internal Paint	30%
External Paint	90%
Snag	0%
Lift	90%

## Building D4



Expected possession – 30/11/2024

Activity	D4
RCC	100%
Blockwork	100%
External Plaster	100%
Wall Conduit	100%
External Plumbing	70%
Conceal Plumbing	100%
Fabrication	0%
Water Proofing	100%
Gypsum	100%
Flooring	20%
Window	0%
Door	0%
Wire & Switch work	0%
Internal Paint	0%
External Paint	0%
Snag	0%
Lift	15%

## Building D5



Expected possession – 30/11/2024

Activity	D5
RCC	100%
Blockwork	100%
External Plaster	70%
Wall Conduit	100%
External Plumbing	50%
Conceal Plumbing	100%
Fabrication	0%
Water Proofing	94%
Gypsum	100%
Flooring	40%
Window	0%
Door	0%
Wire & Switch work	0%
Internal Paint	0%
External Paint	0%
Snag	0%
Lift	10%

## Building D6



Expected possession – 31/07/2024

Activity	D6
RCC	100%
Blockwork	100%
External Plaster	100%
Wall Conduit	100%
External Plumbing	100%
Conceal Plumbing	100%
Fabrication	100%
Water Proofing	100%
Gypsum	100%
Flooring	100%
Window	100%
Door	100%
Wire & Switch work	100%
Internal Paint	100%
External Paint	100%
Snag	100%
Lift	100%

## Building D8



Expected possession – 31/07/2024

Activity	D8
RCC	100%
Blockwork	100%
External Plaster	100%
Wall Conduit	100%
External Plumbing	100%
Conceal Plumbing	100%
Fabrication	100%
Water Proofing	100%
Gypsum	100%
Flooring	100%
Window	100%
Door	100%
Wire & Switch work	100%
Internal Paint	100%
External Paint	100%
Snag	100%
Lift	100%

## Building E1



Expected possession – 31/03/2025

Activity	E1
RCC	100%
Blockwork	100%
External Plaster	100%
Wall Conduit	100%
External Plumbing	70%
Conceal Plumbing	93%
Fabrication	20%
Water Proofing	100%
Gypsum	98%
Flooring	30%
Window	0%
Door	0%
Wire & Switch work	0%
Internal Paint	0%
External Paint	50%
Snag	0%
Lift	10%



## Building E2



Expected possession – 30/11/2024

Activity	E2
RCC	100%
Blockwork	100%
External Plaster	100%
Wall Conduit	100%
External Plumbing	35%
Conceal Plumbing	100%
Fabrication	0%
Water Proofing	100%
Gypsum	100%
Flooring	80%
Window	0%
Door	0%
Wire & Switch work	0%
Internal Paint	0%
External Paint	50%
Snag	0%
Lift	10%

## Building F1



Expected possession – 30/11/2024

Activity	F1
RCC	100%
Blockwork	100%
External Plaster	100%
Wall Conduit	100%
External Plumbing	65%
Conceal Plumbing	100%
Fabrication	100%
Water Proofing	100%
Gypsum	100%
Flooring	100%
Window	95%
Door	30%
Wire & Switch work	5%
Internal Paint	40%
External Paint	90%
Snag	5%
Lift	25%

## Building K1



Expected possession – 31/07/2024

Activity	K1
RCC	100%
Blockwork	100%
External Plaster	100%
Wall Conduit	100%
External Plumbing	100%
Conceal Plumbing	100%
Fabrication	100%
Water Proofing	100%
Gypsum	100%
Flooring	100%
Window	100%
Door	100%
Wire & Switch work	100%
Internal Paint	100%
External Paint	100%
Snag	100%
Lift	100%

## Building K2



Expected possession – 30/11/2024

Activity	K2
RCC	100%
Blockwork	100%
External Plaster	100%
Wall Conduit	100%
External Plumbing	100%
Conceal Plumbing	100%
Fabrication	100%
Water Proofing	100%
Gypsum	100%
Flooring	100%
Window	100%
Door	100%
Wire & Switch work	90%
Internal Paint	35%
External Paint	90%
Snag	50%
Lift	95%

## Building K3



Expected possession – 31/07/2024

Activity	K3
RCC	100%
Blockwork	100%
External Plaster	100%
Wall Conduit	100%
External Plumbing	100%
Conceal Plumbing	100%
Fabrication	100%
Water Proofing	100%
Gypsum	100%
Flooring	100%
Window	100%
Door	100%
Wire & Switch work	85%
Internal Paint	85%
External Paint	95%
Snag	70%
Lift	100%

## Building K4



Expected possession – 30/11/2024

Activity	K4
RCC	100%
Blockwork	100%
External Plaster	100%
Wall Conduit	100%
External Plumbing	100%
Conceal Plumbing	100%
Fabrication	100%
Water Proofing	100%
Gypsum	100%
Flooring	100%
Window	100%
Door	84%
Wire & Switch work	65%
Internal Paint	52%
External Paint	80%
Snag	45%
Lift	60%

## Building K5



Expected possession – 31/03/2025

Activity	K5
RCC	100%
Blockwork	100%
External Plaster	100%
Wall Conduit	100%
External Plumbing	100%
Conceal Plumbing	100%
Fabrication	100%
Water Proofing	100%
Gypsum	100%
Flooring	100%
Window	30%
Door	25%
Wire & Switch work	0%
Internal Paint	0%
External Paint	70%
Snag	0%
Lift	90%

## Building K6



Expected possession – 30/11/2024

Activity	K6
RCC	100%
Blockwork	100%
External Plaster	100%
Wall Conduit	100%
External Plumbing	100%
Conceal Plumbing	100%
Fabrication	100%
Water Proofing	100%
Gypsum	100%
Flooring	98%
Window	70%
Door	66%
Wire & Switch work	50%
Internal Paint	41%
External Paint	80%
Snag	76%
Lift	30%



## Building K7



Expected possession – 31/03/2025

Activity	K7
RCC	100%
Blockwork	100%
External Plaster	40%
Wall Conduit	71%
External Plumbing	0%
Conceal Plumbing	70%
Fabrication	70%
Water Proofing	20%
Gypsum	63%
Flooring	10%
Window	0%
Door	0%
Wire & Switch work	0%
Internal Paint	0%
External Paint	0%
Snag	0%
Lift	0%

## Building K8



Expected possession – 31/03/2025

Activity	K8
RCC	10%
Blockwork	0%
External Plaster	0%
Wall Conduit	0%
External Plumbing	0%
Conceal Plumbing	0%
Fabrication	0%
Water Proofing	0%
Gypsum	0%
Flooring	0%
Window	0%
Door	0%
Wire & Switch work	0%
Internal Paint	0%
External Paint	0%
Snag	0%
Lift	0%



**XR BIA**  
TECHNOLOGY #LIVING IT #LOVING IT

For more updates do visit us at [www.xrbia.com](http://www.xrbia.com)